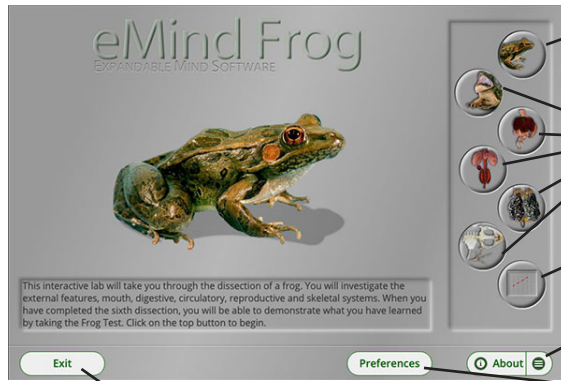


GETTING STARTED WITH eMind FROG

How to Begin



Click the External icon to begin exploring the frog in the recommended sequence

Click any of these icons to begin exploring other frog systems

Click here to begin the frog MiniLabs

Click here to navigate through the program

Click here to set preferences

Click here to exit the lesson

-  **External Features**
The frog's skin, limbs and sense organs.
-  **Mouth Features**
A look at the special adaptations of the frog's mouth.
-  **Digestive System**
The internal organs used for digestion.
-  **Circulatory System**
The internal organs used for breathing and circulation.
-  **Reproductive System**
The frog's sexual organs.
-  **Skeletal System**
A frog Bone Yard.
-  **Frog MiniLabs**
Investigate respiration, digestion, circulation and muscular contraction.

Completing the Guided Dissection

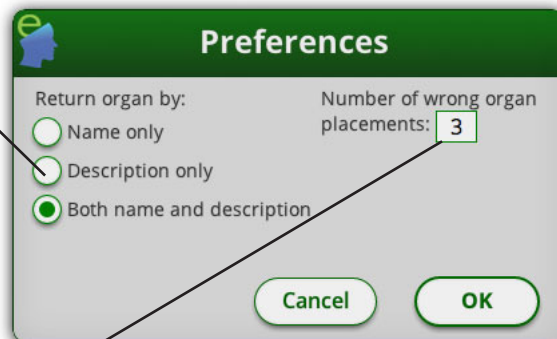
As you complete each frog system, *eMind Frog* enables you to review topics and test your knowledge with the system quizzes.

1. Click the **External** button on the main screen.
2. Complete the module by clicking the specified parts of the frog. When you finish, the program gives you the option to continue or review.
3. If you are ready for the External quiz, click **Continue**, or click a frog part on the screen to review its function.
4. Click **Continue** and complete the quiz as directed by the software.
5. Click **Repeat** to take the quiz over, or click **OK** and then **Next** to continue to another module in the dissection. Some modules ask you to click specified parts of the frog, while others ask you to drag specified organs to and from their proper locations in the frog's body.
6. When you complete all six modules, *eMind Frog* gives you the option of completing the comprehensive Frog Test, or reviewing other modules before continuing into the test.

Setting Preferences

Press the Preference button on the topics screen to display the Preferences dialog box.

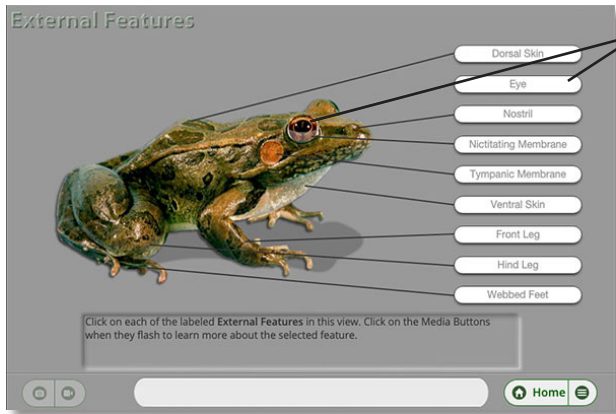
Click a button to be quizzed by organ names, their descriptions, or both



Sets the number of incorrect placements of organs accepted during a quiz



DISSECTING THE FROG

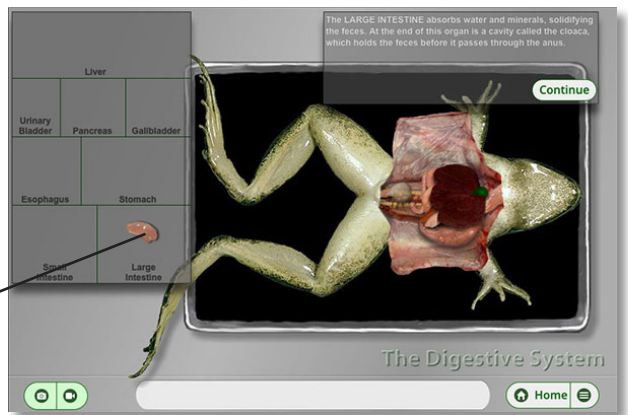


Click a part or its label to view more information

Examining the Exterior Exterior and Mouth Features

Internal Features Digestive, Circulatory and Reproductive Systems

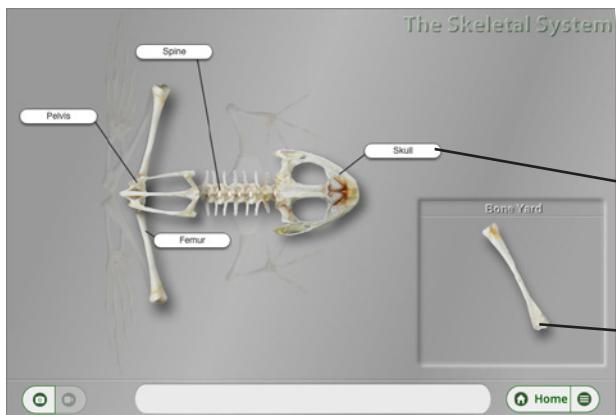
Drag each organ to the correct location on this dissection tray. Some organs might have more than one part



Rebuilding the Skeleton Skeletal System

When you correctly place a bone, a label with its name appears

Drag bones from here to their correct location in the frog skeleton



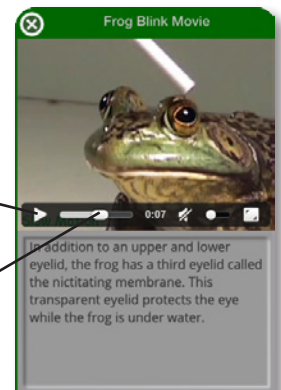
Using the Media Window

Look for the media icons in the lower corner of each dissection screen to flash. Click any flashing icon to see a media window that includes pictures or movies of the indicated frog part.



Click here to start or stop a movie

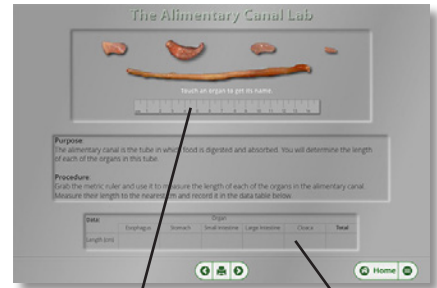
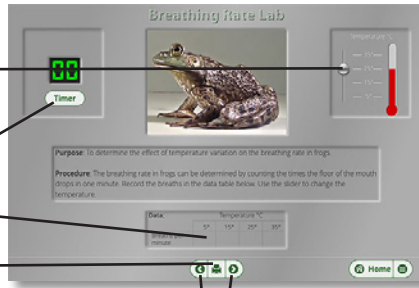
Drag this slider to advance or rewind a movie



DOING THE MINILABS

Gathering Data

- Drag this slider to set the temperature of the frog's environment
- Click here to start and stop the timer
- Type your findings in these fields
- Print each MiniLab with this button



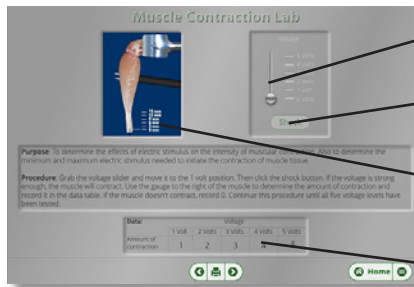
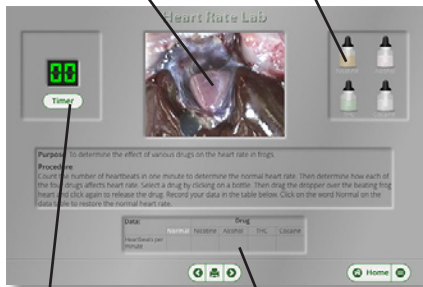
Use these buttons to move to the next and previous screens

Drag the ruler around the screen to help you measure the length of each of the organs

Type your findings in these fields

Click the eyedropper here to deposit a substance

Click here to pick up the indicated substance



Drag this slider to set the shock intensity

Click here to shock the frog muscle

Observe the contraction on this scale

Enter your findings in these fields

Click here to start and stop the timer

Type your findings in these fields

Drawing Conclusions

Enter the measured length of each organ above each divisor line and the total length of the digestive tract below each divisor line

Click here after you enter all of the values in the calculation fields

The data you gathered on the previous screen appears here

Drag these sliders to graph the correct data values

Complete your analysis by answering these questions

